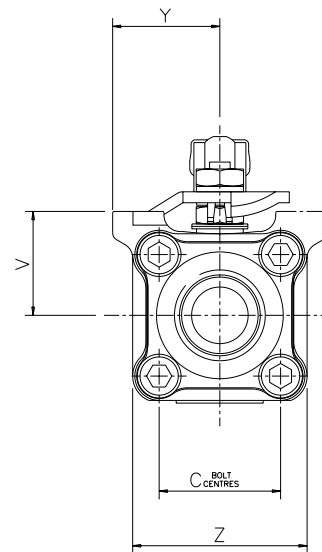
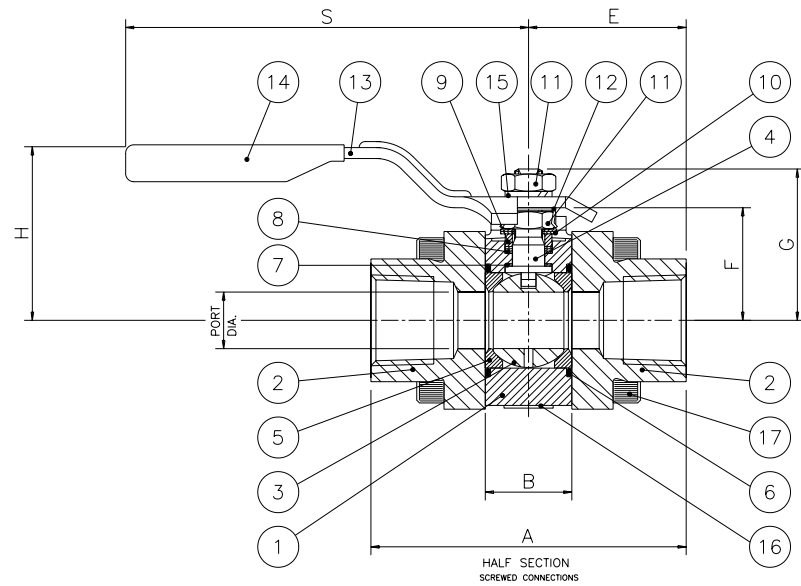
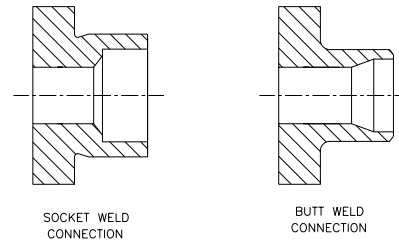
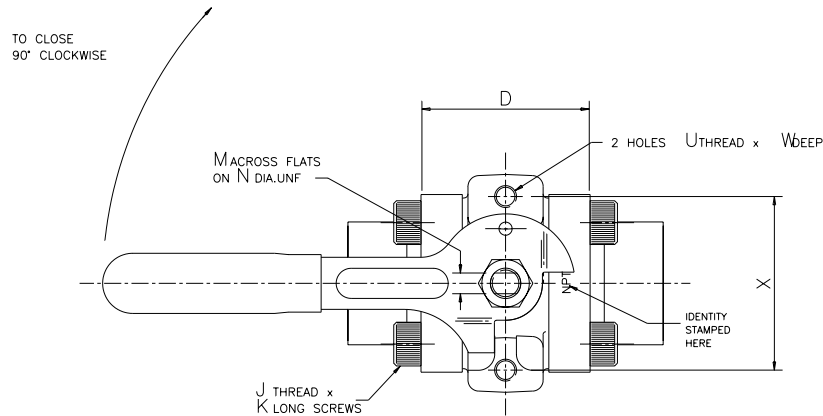


VALVE SIZE		VALVE DIMENSIONS (mm)																			APPROX Kg	
		PORT DIA	A ±0.8	B ±0.07	C ±0.5	D ±0.5	E ±0.5	F ±0.25	G ±0.25	H ±0.8	J	K	M ±0.04	N	S	U	V	W	X	Y		Z ±0.8
8-10-15	1/4-3/8-1/2	11.1	80.6	20.58	31.8	42.8	40.3	27.79	37.99	58.3	M8	20.0	5.50	3/8 UNF	136.0	M6	26.6	9.5	48.0	30.4	47.6	0.9
20	3/4	14.3	94.6	24.55	38.1	51.8	47.3	30.18	40.38	60.6	M8	25.0	5.50	3/8 UNF	136.0	M6	29.0	9.5	54.0	33.4	54.4	1.1
25	1	20.6	115.7	31.69	44.5	61.9	57.8	41.33	55.58	65.5	M10	30.0	7.50	7/16UNF	149.0	M8	38.0	9.7	63.5	40.5	65.4	1.8

ITEM No	DESCRIPTION	MATERIAL	QTY
1	BODY	STAINLESS STEEL ASTM A182 F316	1
2	BODY CONNECTOR	STAINLESS STEEL 316L	2
3	BALL	STAINLESS STEEL 316	1
4	STEM	STAINLESS STEEL ASTM A564 TYPE 630	1
5	SEAT RING	* D ACETAL RESIN - DELRIN	2
6	CONNECTOR SEAL	* B BUNA O-RING * V VITON O-RING	2
7	THRUST SEAL	* NYLATRON	1
8	GLAND PACKING	* PTFE 25% GLASS FILLED	3
9	GLAND	STAINLESS STEEL 316	1
10	DISC SPRING	* STAINLESS STEEL 302	2
11	GLAND/WRENCH NUT	* STAINLESS STEEL 316	2
12	LOCKING CLIP	* CARBON STEEL PLATED	1
13	WRENCH	CARBON STEEL RUSTPROOFED	1
14	WRENCH SLEEVE	VINYL PLASTISOL	1
15	SPRING WASHER	* STAINLESS STEEL 316	1
16	IDENTIFICATION PLATE	STAINLESS STEEL 304	1
17	BODY CONNECTOR SCREW	CARBON STEEL BS 4168 GRADE 12.9	8



END CONNECTOR VARIANTS.

THREADED CONNECTIONS.
 BODY CONNECTORS SCREWED FEMALE TO THE FOLLOWING THREAD SPECIFICATIONS:-
 NPT ANSI B1.20.1 (NPT)
 BSPT ISO R/7.BS 21 (Rc)
 BSPP ISO R/7.BS 21 (Rp)

SOCKET WELD CONNECTIONS.
 BODY CONNECTORS BORED SUITABLE FOR ACCEPTING PLAIN END PIPE TO THE FOLLOWING SPECIFICATIONS:-
 BS 1600 API 5L BS 3600

BUTT WELD CONNECTIONS.
 BODY CONNECTORS PREPARED IN ACCORDANCE WITH RELEVANT MATL.SPEC & ASME CODE SECTION IX. FOR BUTT WELDING PIPE TO THE FOLLOWING SPECIFICATIONS:-
 API 5L BS 1600 SCHEDULES 160/80

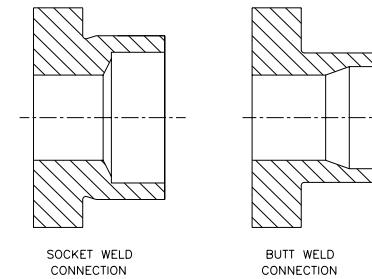
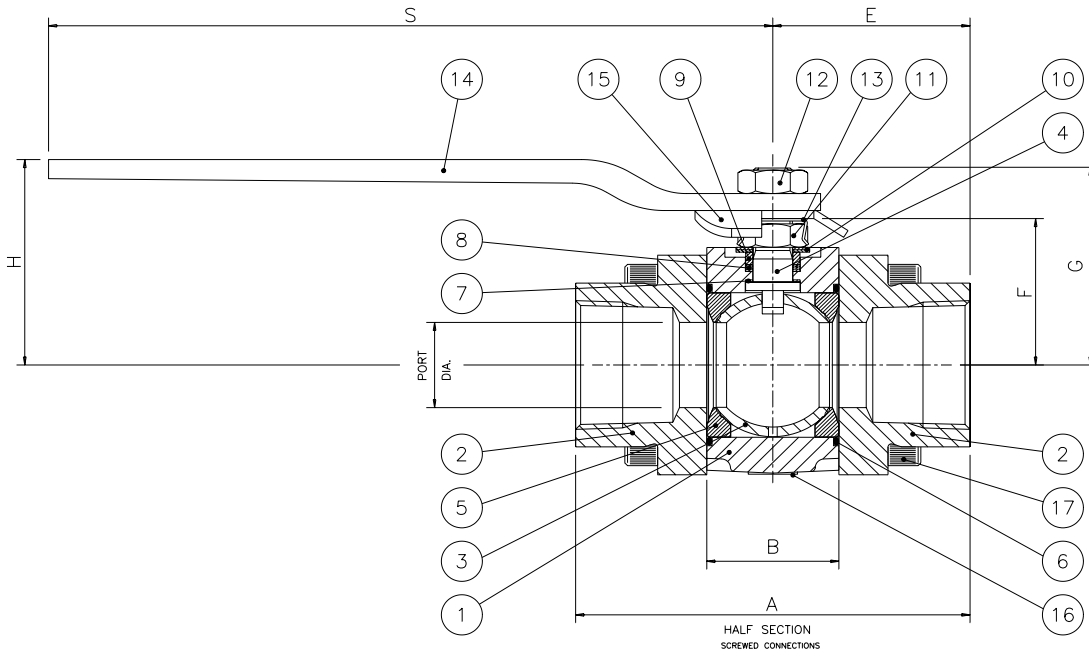
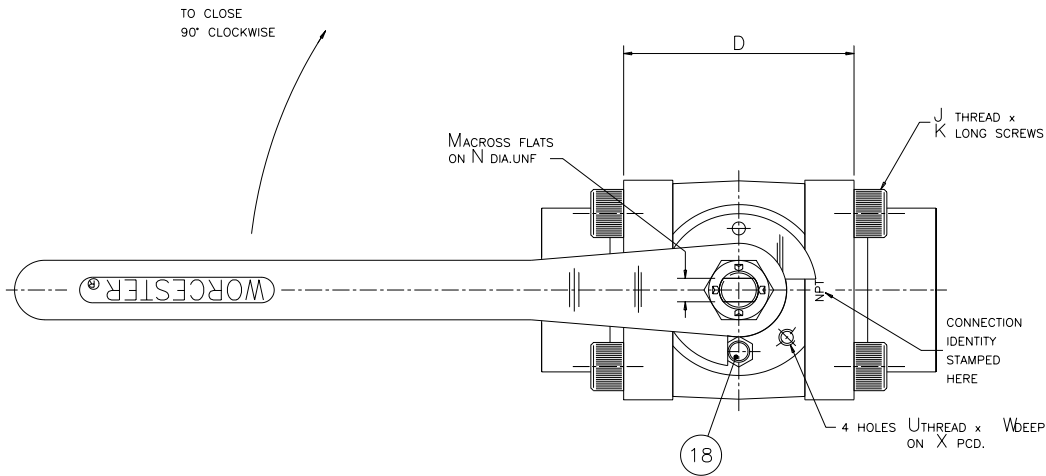
NOTES:-

- DRAWING SHOWS 25mm VALVE WITH SCREWED NPT BODY CONNECTORS.
- FOR ACTUATED VALVES ITEMS 13,14,15 & 1 OFF ITEM 11 ARE OMITTED.
- ITEMS MARKED THUS * DENOTE COMPONENTS SUPPLIED IN REPAIR KIT.
- END TO END DIMENSION 'A' AND CENTRE TO END DIMENSION 'E' IS THE SAME FOR ALL TYPES OF END CONNECTION.

5HP 44 8-25mm

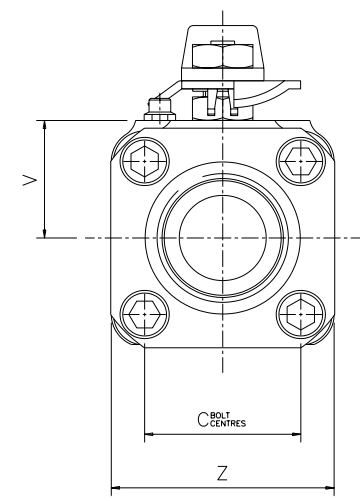
VALVE SIZE		VALVE DIMENSIONS (mm)																			
MM	INS	PORT DIA	A ±1.0	B ±0.07	C ±0.5	D ±0.5	E ±0.5	F ±0.25	G ±0.25	H ±0.8	J	K ±0.04	M	N	S	U	V	W	X	Z ±0.8	APPROX Kg
32	1 1/4	25.4	131.2	41.24	50.8	74.4	65.6	46.08	60.33	70.3	M10	35.0	7.50	7/16UNF	149.0	M5	37.1	7.5	42.0	72.0	2.2
40	1 1/2	31.8	144.4	48.35	57.2	84.6	72.2	54.89	73.04	73.9	M12	40.0	8.67	9/16UNF	254.0	M6	44.0	8.7	50.0	82.0	3.6
50	2	38.1	164.3	56.28	66.7	95.6	82.1	59.64	77.79	78.7	M12	40.0	8.67	9/16UNF	254.0	M6	48.7	8.7	50.0	92.0	4.7

ITEM No	DESCRIPTION	MATERIAL	QTY
1	BODY	STAINLESS STEEL ASTM A182 F316	1
2	BODY CONNECTOR	STAINLESS STEEL 316L	2
3	BALL	STAINLESS STEEL 316	1
4	STEM	STAINLESS STEEL ASTM A564 TYPE 630	1
5	SEAT RING	* D ACETAL RESIN - DELRIN	2
6	CONNECTOR SEAL	* B BUNA 'O' RING * V VITON 'O' RING	2
7	THRUST SEAL	* NYLATRON	1
8	GLAND PACKING	* PTFE 25% GLASS FILLED	3
9	GLAND	STAINLESS STEEL 316	1
10	DISC SPRING	* STAINLESS STEEL 302	2
11	GLAND NUT	* STAINLESS STEEL 316	1
12	WRENCH NUT 'QUADLOC'	* STAINLESS STEEL 316	1
13	LOCKING CLIP	* CARBON STEEL PLATED	1
14	WRENCH	MALLEABLE IRON BS 310 B340/12	1
15	STOP PLATE	CARBON STEEL RUSTPROOFED	1
16	IDENTIFICATION PLATE	STAINLESS STEEL 304	1
17	BODY CONNECTOR SCREW	CARBON STEEL BS 4168 GRADE 12.9	8
18	STOP SCREW	STAINLESS STEEL 316	1



END CONNECTOR VARIANTS.

THREADED CONNECTIONS.
 BODY CONNECTORS SCREWED FEMALE TO THE FOLLOWING THREAD SPECIFICATIONS:-
 NPT ANSI B1.20.1 (NPT)
 BSPT ISO R/7.BS 21 (Rc)
 BSPP ISO R/7.BS 21 (Rp)
SOCKET WELD CONNECTIONS.
 BODY CONNECTORS BORED SUITABLE FOR ACCEPTING PLAIN END PIPE TO THE FOLLOWING SPECIFICATIONS:-
 BS 1600 API 5L BS 3600
BUTT WELD CONNECTIONS.
 BODY CONNECTORS PREPARED IN ACCORDANCE WITH RELEVANT MATL.SPEC & ASME CODE SECTION IX. FOR BUTT WELDING PIPE TO THE FOLLOWING SPECIFICATIONS:-
 API 5L BS 1600 SCHEDULES 160/80



- NOTES:-
- DRAWING SHOWS 40mm VALVE WITH SCREWED NPT BODY CONNECTORS.
 - FOR ACTUATED VALVES ITEMS 12,13,14,15 & 18 ARE OMITTED.
 - ITEMS MARKED * DENOTE COMPONENTS SUPPLIED IN REPAIR KIT.
 - END TO END DIMENSION 'A' AND CENTRE TO END DIMENSION 'E' IS THE SAME FOR ALL TYPES OF END CONNECTION.
 - 32mm VALVE HAS A COMBINED WRENCH & STOP WITH A VINYL PLASTISOL WRENCH SLEEVE FITTED. A SPRING WASHER WITH STANDARD WRENCH NUT REPLACES THE QUADLOC WRENCH NUT.

5HP 44 32-50mm