

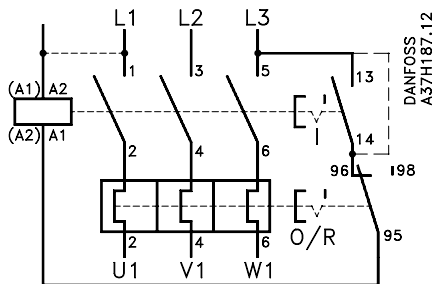
Installation Guide

Thermal Overload Relay

Types TI 80 and TI 86

520B5503

520B5503



Reset button

037H0108

DANFOSS
A37H188.13.11

Test lever

AUTO

MAN

Reset mode:
AUTO: automatic
MAN: manual

During assembly or commissioning check control circuit by pressing test lever and reset button.