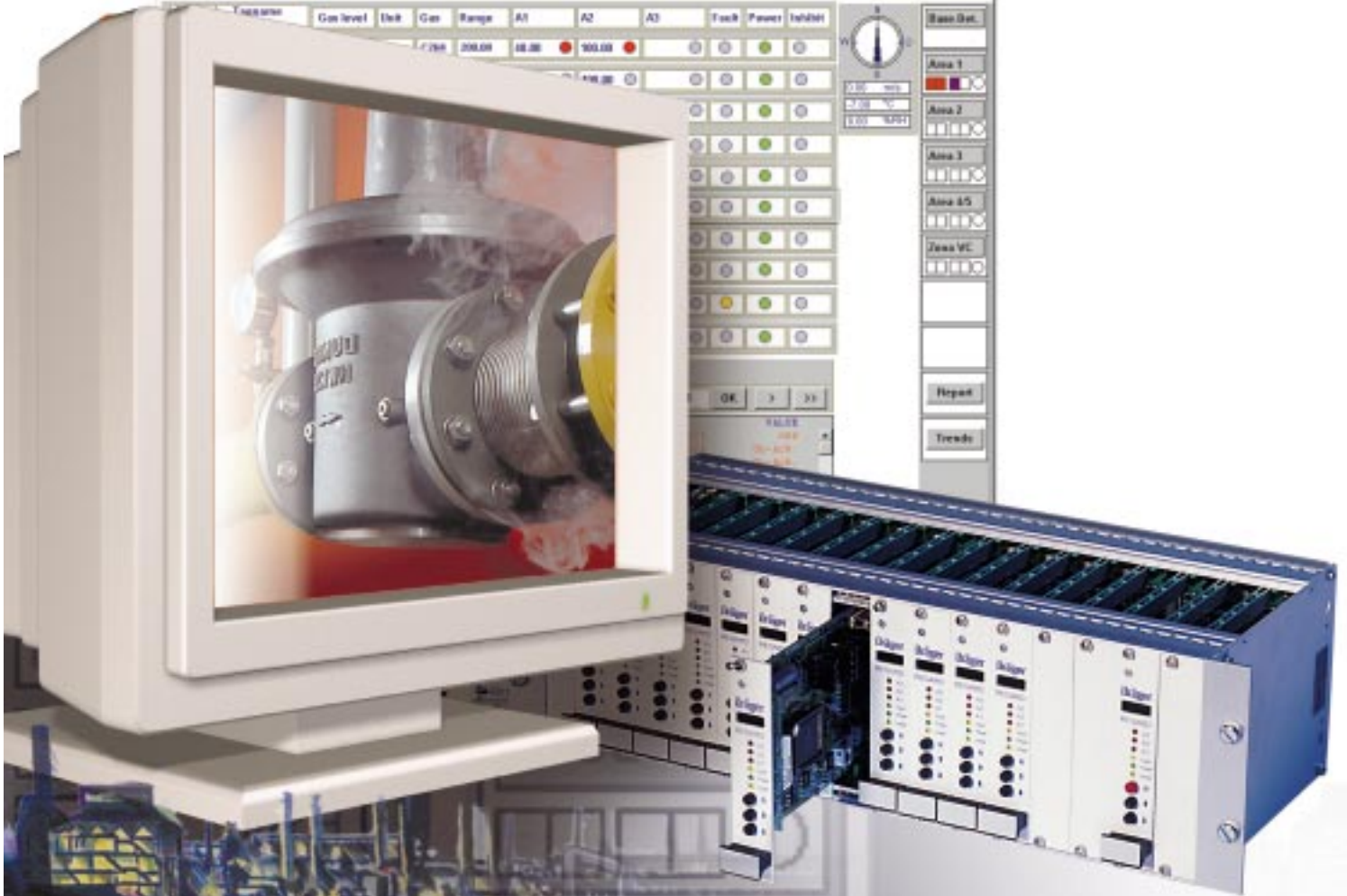


## Vision<sub>32</sub>

The visualization software





### Signal information types

The following signal information is transmitted via serial interface (RS-232, RS422/RS-485) from the Regard Modbus Gateway card item no. 4205706, to the PC and displayed by the visualization software Vision<sub>32</sub>:

For each Regard channel:

- Current measured value (gas concentration),
- Current status of the alarms A1, A2 and A3/fault status,
- Calibration/maintenance signal,
- Inhibit,
- Equipment fault status.

### Screen display

The following screen displays can be configured:



Measured value bar display for showing 5 Regard channels simultaneously.

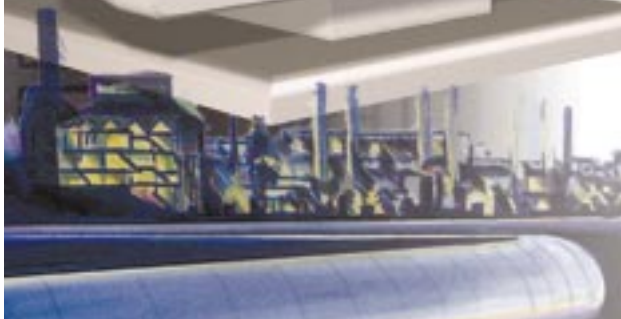
- Alarm/message window,
- Status display for all incorporated plant images,
- Operator functions.

The visualization software Vision<sub>32</sub> graphically depicts gas concentration values and status changes such as alarm, malfunction and calibration states of the Regard Control System in the form of bar-graphs, tables, XY diagrams, and plant images.

The Intellution automation software FIX™ starting with 6.15 serves as a basis for the customer-specific programming and configuration of Vision<sub>32</sub>. FIX™ is a genuine 32-bit application and is designed to run PCs with the operating system Windows NT® 4.0 or higher.

After all customer-specific modifications to Vision<sub>32</sub> have been made, a runtime license for FIX™ is required for operation.

The runtime license version must be determined for each application and is dependent on the number of Regard channels to be visualized.



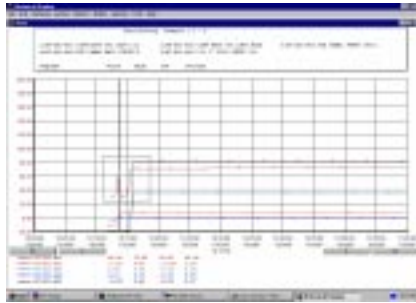


Measured value table display for displaying 10 Regard channels simultaneously:



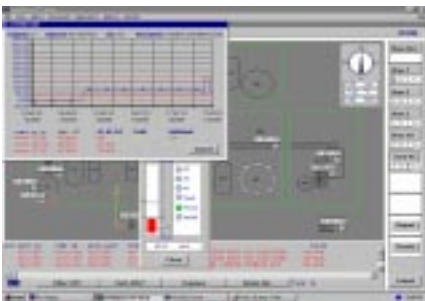
- Alarm / message window,
- Status display for all incorporated plant images,
- Operator functions.

Measured value progression data history



- The progression of the measured values of 5 Regard channels can be displayed simultaneously as a gas concentration/time diagram of the last 31 days.

Measured value progression analysis / short-term trend



- Display of the progression of measured values of a single Regard channel as a gas concentration/time diagram of the last 20 minutes.

Integration of plant images



- Display of the gas transmitters which shows the position within the system and the alarm/report message (gas/fault alarm: off, acknowledged, not acknowledged; report message: calibration, inhibit equipment fault).
- A bargraph can be called up for each gas transmitter.

### Hardware requirements

- PC and Pentium II processor
- > 233 Mhz
- > 64 MB RAM
- 3.5" floppy disk
- > 1.0 GB free hard disk space
- CD-ROM drive
- High-resolution graphic card (resolution 1024 x 768 / 75 Hz)
- min. 1 free serial port (system-dependent)
- min. 17" monitor (resolution 1024 x 768 / 75 Hz)
- IBM or Microsoft compatible mouse

### Software requirements

Operating system Windows NT® 4.0 or higher. The runtime license of Intellution FIX™ version 6.15 or higher. To install Intellution FIX™, you must first install Windows NT® 4.0 completely and configure all the operating and output components.

### Compatible systems

Control system Regard with Modbus Gateway card. Other systems with serial interface and Modbus protocol.

**Dräger**  
**Sicherheitstechnik GmbH**  
Revalstrasse 1  
D - 23560 Luebeck  
Germany  
Tel. + 49 451 8 82 - 27 94  
Fax + 49 451 8 82 - 49 91

**Draeger Ltd.**  
Ullswater Close  
Kitty Brewster Industrial Estate  
Blyth, Northumberland, NE24 4RG  
United Kingdom  
Tel. + 44 1670 352891  
Fax + 44 1670 356266

**Draeger Industrie S.A.**  
3c, Route de la Fédération  
F - 67025 Strasbourg Cedex  
France  
Tel. + 33 388 407676  
Fax + 33 388 407667

**Draeger Safety, Inc.**  
10450 Stancliff  
Suite 220  
Houston, TX 77099  
USA  
Tel. + 1 281 498 1082  
Fax + 1 281 498 5190

**Draeger South East Asia Pte Ltd.**  
67, Ayer Rajah Crescent #06-03  
SGP-139950 Singapore  
Singapore  
Tel. + 65 872 9288  
Fax + 65 773 2033

**Beijing Fortune Draeger Safety  
Equipment Co., Ltd.**  
Jixiang Lu. B Area  
Beijing  
Tianzhu Airport Industrial Zone  
Houshayu  
Shunyi County  
Beijing, 101300  
P.R. China  
Tel. + 86 10 80498000  
Fax + 86 10 80498005

Visit us at:  
[www.draeger.com/gds](http://www.draeger.com/gds)

**Quality and Environmental Management**  
Our mission includes the continuous improvement of our Quality and Environmental Management Systems in accordance with ISO 9001 and ISO 14001.

#### **DrägerService**

Dräger equipment must always be fully operational and safe. DrägerService offers a regular inspection service and is quickly available in the event of malfunction. Your equipment will be repaired and back in operation as quickly as possible. DrägerService facilitates the vital flow of information between client and manufacturer.

#### **Dräger Expertise**

Since 1889, Dräger has had an outstanding reputation for solving problems in the field of human breathing. Dräger has been deeply involved in the handling of gases, in particular hazard protection and the saving of life in medical and industrial emergencies. Many of the company's 8500 employees are active in research and innovation to ensure that the latest techniques and scientific advances are fully tested before their inclusion in new equipment.



#### **Dräger Worldwide**

The Dräger sales and service organisation is spread throughout the world. It comprises more than 25 subsidiaries and associated companies to ensure that Dräger is always within easy reach of its clients and in close contact with all important markets. Dräger's ever increasing market share demonstrates the company's international competitiveness and strength.

Dräger has subsidiaries in the following countries: Australia, Austria, Belgium, Bulgaria, Canada, China, Croatia, Czech Republic, Denmark, France, Great Britain, Hungary, Indonesia, Italy, Japan, the Netherlands, Norway, Romania, Singapore, South Korea, Slovenia, Slovakia, South Africa, Spain, Sweden, Switzerland, Yugoslavia, USA. Additionally, Dräger is widely represented in Central and South America, Africa, the Middle East, the Far East and Eastern Europe.

Represented by: